

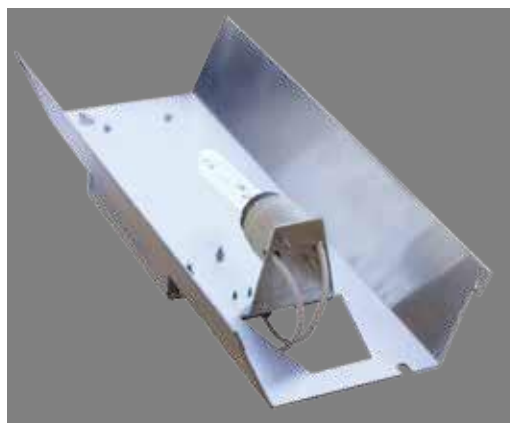
WESTIRE SmartStar HID Ballast and Gear Tray Assembly

An all in one energy saving solution from WESTIRE. The WESTIRE SmartStar Gear Tray Assembly combines a gear tray with lamp holder, ballast and lamp at a very competitive price. This solution enables you to convert from magnetic to electronic control gear with a white light source. If required the ballast also comes with dimming and central management system capabilities. The all in one solution is designed to install quickly and easily, minimising time on site. This allows for large scale replacement schemes in short or restricted timescales.



**Guaranteed
For
8 Years**

WESTIRE SmartStar Gear Tray Assembly



Key benefits of the SmartStar® Gear Tray Solution

- Retro fit, easy install white light alternative to LED
- Easy and quick retro fit installation
- Pre-fabricated gear tray to suit the lantern
- White HID light as an alternative to LED lighting
- Pre-configured WESTIRE SmartStar® Ballast can be CMS and dimming ready if required
- Complete with associated wiring and lamp holder
- Suitable for any lantern type
- Compatible with SELC 45-150W ballasts as standard (250W on request)
- Lamp holder to suit whatever lamp

All WESTIRE'S Products are manufactured within the European Union including the WESTIRE SmartStar HID Ballasts and Gear Trays are in compliance with all the necessary EU Directives applicable to Road and Street Light Controls. Automated State of the Art Production Machinery is utilised for manufacturing along with all the necessary computerised test equipment and burn-in ovens. Regular independent audits are carried out so as to ensure full compliance with I.S. EN ISO, UL and CUL manufacturing standards

WESTIRE SmartStar Gear Tray Solution

Used with a WESTIRE photocell additional energy savings can be made with part-night lighting.

Get the most out of your street lighting assets by retro-fitting the **SmartStar® Gear Tray Assembly**.



Technical Specifications

Gear Tray	
Gear Tray Material	Aluminium
Suitable for Lamp Type	All
Dimensions	Custom built to customer requirements
SmartStar® Ballast	
Wattage	45W – 150W As standard (higher wattages on request)
Power Factor	Typically >0.98
Dimensions	184mm X 78mm X 46mm
Power Consumption	<1 watt
Lamp Types	All Types of HID Lamps

An Inexpensive Alternative to an LED Luminaire Installation



*Guarantee subject to WESTIRE Terms & Conditions
Doc No. WESTIRE SmartStar® Gear Tray Solution

WESTIRE Technology Limited
Industrial Estate
Belmullet
County Mayo
Ireland F26 TE81

WEB: www.westire.com
Tel: + 353 (0) 97 81209
Fx: + 353 (0) 97 81400
E Mail: [info @ Westire.com](mailto:info@westire.com)

