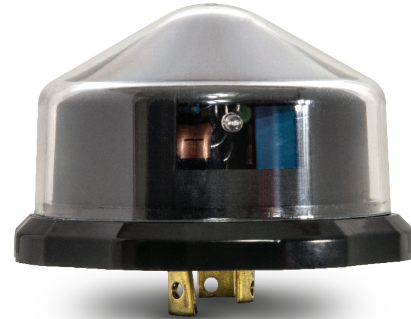


Utility Grade Photocell

WESTIRE 6300 SERIES

Engineered for today's
competitive market.



Reliability

The 6300 Series photocell utilizes a filtered silicon based ambient light sensor and microprocessor controlled 10 amp lighting load relay. This combination provides the best energy savings and reliable operation.

Quality

Engineered, in the EU, with a 10 year design life and manufactured in-house using only high quality, name brand components, the 6300 series photocells are designed for specifiers, OEMs and other price sensitive applications.

Features & Benefits

- Electronic design outperforms thermal controls
- Designed to meet the needs of HPS and HID fixture while maintaining proven reliability
- Energy efficient design with a average power consumption <0.25 watts
- North Facing Design
- Designed for Traditional Lighting sources.
- UV stabilized polycarbonate housing is rated and tested to IP 65.
- Low Profile enclosure
- A 48 hour operational burn-in and full electrical test is performed on every unit before leaving the factory.
- ROHS compliant

Technical Specifications

6300 Series
Rev 0.4 Winter 2018

General		Environmental	
Dimensions	North facing: 3.4" Ø x 1.9" H 86.3Ø x 48.26 mm H	Operating Temperature	-30° C to +70° C -22° F to +178° F
Receptacle Compatibility	ANSI C136.10 / ANSI C136.41	Enclosure Protection	IP65 (When Installed)
Warranty	8 Year Standard	Standards Compliance	Environmental RoHs, EN55015, EN61547, EN6100-3-2, EN6100-3-3, IS EN ISO 9001: 2015 ANSI C136.10
Power		Switching	
Mains Supply	105 - 305 Volts AC - 50/60 Hz.	Switch "On" Light Level	1.5fc ± 0.025
Power Supply Consumption	Less than 0.25 Watts	Switching Ratio	1:1.5
Maximum Load Current (A)	10 Amps	Ambient Light sensor	Color corrected photodiode + amplifier
Surge Protection	320 Joule MOV	Switching Time Delay	Instant On : 25 Second Delay Off
Load Rating	1800 VA Ballast / 1000 Watts	Switching Options	Dusk to Dawn

Ordering Information

Configurations	
6303-BL	Multi-volt, North Facing , Fail On, 1:1.5 Switching Ratio , Instant On 25 Seconds off , 320j MOV, 1.5 FC, Blue Housing
Custom Configurations Available - Consult Customer Service for more options	

6303 - BL = 6303-BL

6303 - X

Cap Color
BK - Black
BL - Blue



Designed for the US Market