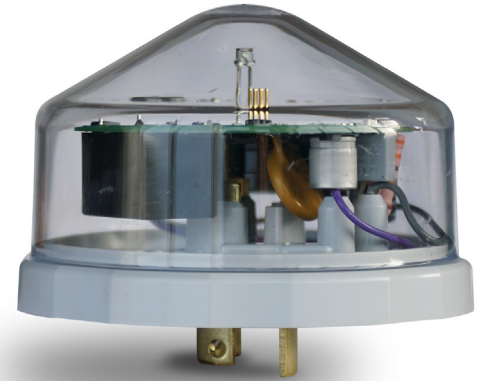


Westire 9400

DALI DIMMING PHOTOCELL

Reduces power
consumption to your
specification, delivering
cost & energy savings



Standalone Device
No Monitoring or CMS Needed
No Recurring Costs

Features & Benefits

- Cost savings through reduced power consumption
- Part-Night, On/Off & dimming schedules **programmed to your specification**
- **World's most advanced** A.I. Solar Time Clock Algorithms
- DALI2 - D4i ANSI C136 compliant
- Innovative overvoltage protection, **protecting LED driver & light engine**



General	
Dimensions	86.3 mm Ø x 53.34 mm H 3.4" Ø x 2.1" H
Connection	NEMA 3 & 7, ANSI
Guarantee	10 year

Power	
Mains Supply	85V - 305 Volts AC 50/60 Hertz
Surge Protection	320 Joule 12,000 Amps
Maximum Load Current (A)	10 Amps
Photocell Power	<500mW

Environmental	
Operating Temperature	-20° C to +80° C -4° F to +176° F
Enclosure Protection Rating	IP68 (Ultrasonically bonded)
Designed to Meet	ANSI C136, DALI D4i IS EN ISO 9001: 2015, Environmental RoHS

Switching	
Communications	DALI D4i
Dimming Options	Multiple options from 1 - 100
Light Level Switching	35 Lux On / 18 Lux Off as standard. Other level available on request
Switching Ratio	1 - 0.5 to 1:3 - Inverse ratios available
Time Reference Stabilisation	< 3 days
Switching Time Delay	25 Seconds or on request
Switching	Relay zero point micro controlled switching

Applications

- Delivering standalone dimming:
 - **Factory Standard Dimming Schedule** or
 - **Customer Preference Dimming Schedule**
- Fits all LED luminaires equipped with ANSI/NEMA 3 & 7 pin twist lock sockets
- Dimming & controlling all types of outdoor street, road, security, amenity and campus lighting
- Interfaces with all Dali D4i LED smart drivers
- Wall mounting socket and bracket available

Dimming Schedule

