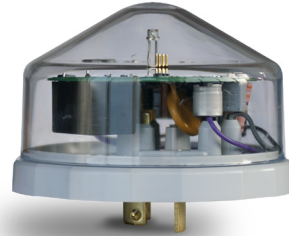


## Westire DALI D4i Motion Dimming Module & Photocell

DALI Dimming Photocells

Dims the streetlight and  
increases to full brightness  
once movement is detected  
for **cost & energy savings**



9400 Photocell



Zhaga Photocell



TE Passive Infra-red  
Dimming Module



**Standalone Device**

**No Monitoring or CMS Needed**

**No Recurring Costs**

### Features & Benefits

- Streetlight dims by pre-set amount until activated by movement
- Default 20% power output
- Default 100% output for 2 minutes when activated
- Customised lighting profiles available
- Easy to fit in Zhaga D4i or standard ANSI/NEMA Twistlock C136 sockets
- Interoperability with DALI D4i approved LED drivers
- Incorporates all features of Westire's gold standard photocells
- Designed to operate within DALI-2 - D4i ecosystem
- Version available for ANSI/NEMA C136 Socket



General		Environmental	
Dimensions Zhaga	40mm x 30mm 1.5" x 1.18"	Temperature rating Zhaga	-30° C to +70° C -22° F to +158° F
Dimensions ANSI/NEMA 9400 Photocell	86mm x 53.34mm 3.38" x 2.1"	Temperature rating 9400 Photocell	-20° C to +80° C -4° F to +176° F
Dimensions Motion Dimming Module	79.7mm x 42.05 mm 3.13" x 1.67"	Temperature Rating Motion Module	-40° C to +65° C -40° F to +149° F
Receptacle Compatability	Zhaga Book 18 & ANSI/NEMA	IP Rating	Zhaga Rated to IP66 9400 Rated to IP68 Motion Sensor Rated to IP66
Guarantee	8 year		
Power		Standards Designed to	
9400 Photocell	85V to 305V AC - 50/60 Hz	9400 Photocell	DALI2 D4i, IS EN ISO 9001 2015, Environmental RoHS 2015 BS5972
Zhaga Photocell	24V DC	Zhaga Photocell	IE 62386 - 101 IE 62386 - 103 IE62386 - 351 (Type A control device)
Motion Module	Powered from DALI Bus	Motion Module	Zhaga Book 18,1,2 & 3, Zhaga Book 18 Editions 1, 2 & 3, DiiA Parts 351, IEC 62386 Part 303, 101 & 103
<b>Power Consumption</b>			
9400 Photocell	<500mW		
Zhaga Photocell	<0.01 W		
Motion Module	6-8mA from DA		
Switching		Time Delay	
Zhaga Photocell & 9400 Photocell Switching	20:20 Standard (Other settings on request)	Zhaga Photocell & 9400 Photocell	25 seconds or on request
Ambient Light Sensor	Silicone & Colour Corrected Zhaga Photocell & 9400 Photocell		

## Applications

- Motion activated streetlighting
- Save energy, save money & provide lighting when needed
- Automatically switches streetlights "Off" or "On", motion module activated illumination
- Road, streetlighting and area lighting dimming control requirements
- Interoperable with either Zhaga, ANSI/NEMA Westire Photocells

