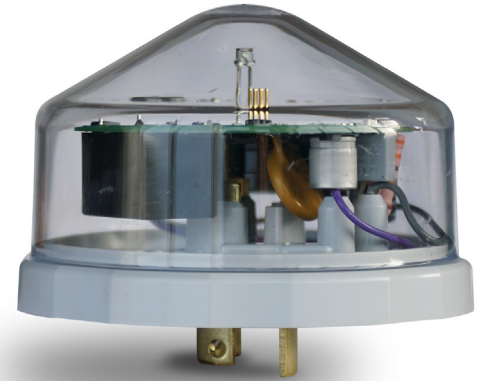


## Westire 9400

DALI DIMMING PHOTOCELL

Reduces power  
consumption to your  
specification, delivering  
**cost & energy savings**



**Standalone Device**  
**No Monitoring or CMS Needed**  
**No Recurring Costs**

### Features & Benefits

- Cost savings through reduced power consumption
- Part-Night, On/Off & dimming schedules **programmed to your specification**
- **World's most advanced** A.I. Solar Time Clock Algorithms
- DALI2 - D4i ANSI C136 compliant
- Innovative overvoltage protection, **protecting LED driver & light engine**



General	
Dimensions	78.4 mm D x 69.85 mm H 3.08" D x 2.75" H
Connection	NEMA 3/5/7 Pin ANCI 136.10
Warranty	10 Years

Power	
Mains Supply	85V - 305 Volts AC 50/60 Hertz
Surge Protection	320 Joule 12,000 Amps
Average Power Consumption	<0.25 Watts nominal
Maximum Load Current (A)	10 Amps
Load Rating	1.8kVA

Environmental	
Operating Temperature	-20° C to +80° C -4° F to +176° F
Enclosure Protection Rating	IP68 (Ultrasonically bonded)
Standards Compliance	ANSI C136, DALI D4i IS EN ISO 9001: 2015, Environmental RoHS

Switching	
Operating Levels	10 to 200 Lux ± 0.025
On/Off, Dusk/Dawn Switching Accuracy	+/- 7% Evening regardless of cloud cover or infrared radiation
Switching Ratio	1 - 0.5 to 1:3 - Inverse ratios available
Ambient Light sensor	Eye Response IR filtered silicon light sensor
Switching Time Delay	0 to 25 Seconds ON 2.5 to 20 Seconds OFF
Switching	Relay zero point micro controlled switching

## Applications

- Delivering standalone dimming:
  - **Factory Standard Dimming Schedule** or
  - **Customer Preference Dimming Schedule**
- Fits all LED luminaires equipped with ANSI/NEMA 5 & 7 pin twist lock sockets
- Dimming & controlling all types of outdoor street, road, security, amenity and campus lighting
- Interfaces with all Dali D4i LED smart drivers
- Wall mounting socket and bracket available

## Dimming Schedule

